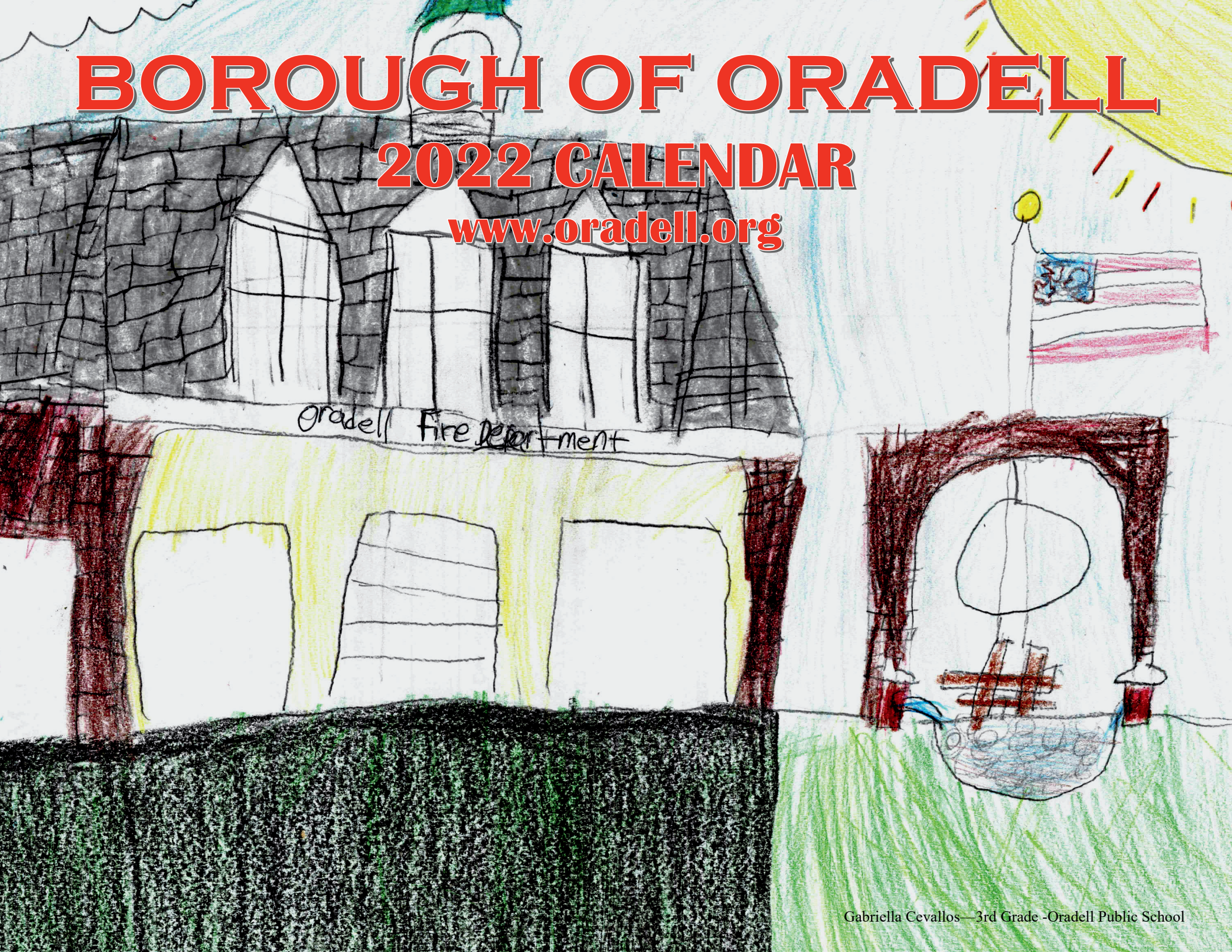


BOROUGH OF ORADELL

2022 CALENDAR

www.oradell.org





FROM MAYOR DIANNE CAMELO DIDIO

Dear Neighbors:

In last year's message, I had wished you all a happier, healthier and more "normal" 2021! Although 2021 was not nearly as "normal" as we all hoped it would be, our return to "normal" is more and more evident each day. The annual lighting of the Menorah and the Christmas Tree at Borough Hall which both recently took place, were examples of that. It was terrific to see so many of you present to celebrate these events in person! The hope and promise of an even better 2022 was reflected in the many smiling faces (and eyes) of those present!

This year our calendar celebrates the 125th Anniversary of the Oradell Volunteer Fire Department. Like all of our first responders, police and EMT included, our firefighters have given so much of themselves during this pandemic to protect and keep us safe. In the calendar, the artwork of our OPS students pays tribute to our firefighters and the many ways they serve our community. Please enjoy the beautiful drawings that capture so well the thankfulness we have for our firefighters!

Please also check the Borough's website, www.oradell.org, and please register at www.oradellalert.com for our new emergency message system (via phone, sms, email, etc.) with Rave Alert, for the most up to date information.

Best wishes for a happy, healthy New Year,

Mayor Dianne Camelo Didio

BOROUGH FORM OF GOVERNMENT

The Borough is governed by a Mayor and Borough Council elected by voters. The Mayor is elected for a four year term. The duties include presiding at meetings of governing body, signing contracts, and appointing various Borough officials and members of boards and committees subject to Council confirmation. The Mayor votes in the event there is a tie.

There are six members of the Borough Council who are elected at large to serve staggered three years terms of office. The Council approves the annual budget, adopts ordinances and resolutions and determines policy. The council members serve as a chair of various committees and as members of assigned committees.

ADMINISTRATOR

Administrator is appointed by the Mayor and Council. The Borough Administrator directs all Borough departments in accordance with policy directives as determined by the Mayor and Council. As the Chief Administrative Officer, the Administrator is responsible for the day to day operations of the Borough. Other job functions include serving as the purchasing agent, personnel officer, liaison with Federal, State and local agencies, and preparation of the annual budget and capital plan for review and approval by the Mayor and Council.

CHIEF FINANCIAL OFFICER

The Chief Financial Officer is a Certified Municipal Finance Officer as required by State law. The C.F.O. is responsible for all financial functions. Some examples are supervising borough funds and investments, maintaining adequate cash flow, monitor budget expenditures, assist in the preparation of the annual budget and act as financial advisor to the Mayor and Council.

TELEPHONE DIRECTORY

Mayor	(201) 649-9273
Administrator	(201) 261-8200
Borough Clerk	(201) 261-8200
Deputy Borough Clerk	(201) 261-8200 x249
Administrator's Assistant	(201) 261-8200 x251
Police and Fire	(201) 261-0200
Board of Health/Vital Statistics	(201) 261-8106
Building Office	(201) 261-8005
Public Works/Recycling/Trees	(201) 261-8610
Library	(201) 262-2613
Municipal Court's Office (Paramus)	(201) 265-2100 x2320
Recreation	(201) 261-8200 x243
Tax Assessor	(201) 261-0204
Tax Collector	(201) 649-9264
Oradell Public School	(201) 261-1180
River Dell High School	(201) 599-7200
River Dell Middle School	(201) 599-7250
Senior & ADA Transportation	(201) 649-9271

OFFICE HOURS

Borough Hall	8:00 am to 4:00 pm
Police Secretary	7:00 am to 3:00 pm
Public Works	7:30 am to 3:15 pm
Recycling Center: M-F	10:00 am to 3:00 pm
1st & 3rd Saturday	9:00 am to 12:00 pm
Library Monday –Thursday	10:00 am to 9:00 pm
Junior Room	10:00 am to 7:00 pm
Friday-Saturday	10:00 am to 5:00 pm
Sunday	1:00 pm to 5:00 pm
<i>Library is closed on Sundays from July 1 through Labor Day</i>	

Board of Health:

Monday, Wednesday & Friday 8 am to 4 pm
Tuesday & Thursday by appointment only

Building Office: 8:00 am to 4:00 pm

Tax Assessor :

Monday 4:00 pm to 6:00 pm
Tuesday 6:30 pm to 8:00 pm

MAYOR'S OFFICE

Please call the Borough Clerk's Office to make an appointment with the Mayor.



2022 MAYOR AND COUNCIL

BOROUGH OF ORADELL SCHEDULE OF MEETINGS OF THE MAYOR AND COUNCIL FOR THE YEAR 2022

MAYOR AND COUNCIL – 7:30 PM

Take Notice that pursuant to Sec. 13 of P.L. 1975 Chpt. 231, of the Laws of the State of New Jersey, the regular meetings of the Mayor and Council, Boards, and Committees of the Borough of Oradell shall be held in the Municipal Building, 355 Kinderkamack Road, as follows:

WORK SESSION MEETINGS

REGULAR PUBLIC MEETINGS

** January 4, 2022

January 25, 2022

February 2, 2022

February 15, 2022

March 8, 2022

March 22, 2022

April 6, 2022

April 19, 2022

May 10, 2022

May 24, 2022

June 14, 2022

June 28, 2022

July 19, 2022 (Joint Meeting)

July 19, 2022 (Joint Meeting)

August 16, 2022 (Joint Meeting)

August 16, 2022 (Joint Meeting)

September 13, 2022

September 27, 2022

October 11, 2022

October 25, 2022

November 22, 2022 (Joint Meeting)

November 22, 2022 (Joint Meeting)

December 13, 2022 (Joint Meeting)

December 13, 2022 (Joint Meeting)

**** Sine Die & Reorganization**

Sine Die 7:00pm / Reorganization 7:30pm

Official action may be taken at the Mayor & Council Work Session.

From time to time, the Mayor & Council by resolution, will hold a closed session meeting prior to Work Session for those matters permitted to be discussed in accordance with the "Open Public Meeting Act". Notice of such meetings will hereafter be published.

Mayor & Council meetings are televised on OPTV
Cablevision (Channel 77) or Verizon (Channel 2128)
Or streamed on www.oradell.org

ZOOM will continue to be permitted as a "call in" feature. See website for links



MUNICIPAL CLERK



The Municipal Clerk is appointed by the Mayor and Council. The Municipal Clerk must hold a Registered Municipal Clerk Certification issued by the State of New Jersey. The Clerk serves as the Secretary to the Governing Body, prepares meeting agendas, records the minutes of the Council meetings which are permanent document, and processes resolutions and ordinances adopted by the Council pursuant to State Statutes.

The Municipal Clerk is a Custodian of the Municipal Seal, maintains custody of all minutes, books, bonds, contracts, archival records of the municipality, processes OPRA requests and is the Assessment Search Official. The Clerk also acts as liaison to the public, correspondent on behalf of the Governing Body, and represents the Borough's interest in relations with Federal, State and local units of government.

As the Election Official, the Municipal Clerk accepts voter registration applications, issues and receives nominating petitions for Borough elective positions, conducts local elections and certifies election results.

The Municipal Clerk issues the following licenses: Raffle and Bingo; limousine, towing and various annual liquor licenses.

OPRA



All OPRA must be submitted to the Borough Clerk by email (LLyons@oradell.org) or by delivering to the Clerk's Office. Once approved, it will be dispersed to the appropriate department for fulfillment. The time frame on all requests is typically 1-7 days. The OPRA form can be obtained from the Clerks office or by visiting www.oradell.org.

VOTING

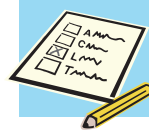


In order to register to vote, a person must be a resident of Oradell and Bergen County for 30 days, be eighteen (18) years old, and a U.S. Citizen before Election Day. Voter registration application forms can be obtained from the Municipal Clerk's office.

Facts About Party Affiliation

Only party members may vote in the Primary Election in New Jersey. Voters participating in their first Primary Election, regardless of the number of years registered, must state their party affiliation at the polls on primary election day. In order to change party affiliation, the voter must file a party declaration form with the Bergen County Superintendent of Elections no later than 50 days prior to the primary election.

Vote By Mail Ballots:



A voter may apply for a Mail-In Ballot by mail up to 7 days prior to the election. He or she may also apply in person to the County Clerk until 3:00 P.M. the day before the election. Applications can be picked up in the Municipal Clerk's Office and must be returned to the County Clerk in the County of your last domicile in New Jersey.

Note also that permanently and totally disabled voters have the option of indicating on an application to Vote By Mail that they would prefer to receive an application to Vote By Mail for each election that takes place during the remainder of the calendar year.

Voters who are not permanently and totally disabled now have the option of automatically receiving an application to Vote By Mail for any General Election. If such voter no longer wants this option, the County Clerk's office must be notified.

ONLY if sick or confined, voter may apply for an Absentee Ballot by Authorized Messenger. Messenger shall be a family member or a registered voter of this County.

VOTING INFORMATION

1. You must be a registered voter in order to apply for an application to Vote By Mail.
2. Once you apply for an application to Vote By Mail, you will not be permitted to vote at your polling place in the same election.
3. Your ballot will be mailed to you on or after the 40th day prior to Election Day. You will receive instructions with your ballot.
4. Your actual application to Vote By Mail must be received by the County Board of Elections before close of polls on Election Day.
5. Do not submit more than one application for the same election.
6. You must apply for an application to Vote By Mail for each election, unless you designate otherwise under **"OPTIONS"**

NO CANDIDATE IN THE ELECTION FOR WHICH THE VOTER IS REQUESTING AN ABSENTEE BALLOT CAN BE AN ASSISTOR OR AUTHORIZED MESSENGER.

Polling Places

District 1	St. Joseph School
District 2 & 3	River Dell Regional H.S.
District 4 & 6	Borough Hall
District 5	Bergen Catholic H.S.

2022 DIRECTORY OF BOROUGH OFFICIALS

MAYOR

DIANNE CAMELO DIDIO

BOROUGH COUNCIL

TRACY SCHOENBERG	ROGER B. TASHJIAN
STEPHEN CARNEVALE	ROBERT JANNICELLI
MIRIAM YU	JONATHAN KERN



Borough Administrator	Laura J. Lyons, CPM, RMC, RPPO
Municipal Clerk	Laura J. Lyons, CPM, RMC, RPPO
Deputy Borough Clerk	Melissa A. Presta
Borough Attorney	Andrew Oddo, Esq.
Borough Engineer	Neglia Engineering
Chief Financial Officer	Katie W. Chen, CMFO
Tax Collector	Stefanie Stokes
Construction Official	Stephen A. Depken
Tax Assessor	James A. Anzevino
Police Chief	William Wicker
Supt. of Public Works	Daniel Nywening, C.P.W.M.
Fire Chief	Joseph Lomoriello
OEM Coordinator	Joseph Gothelf
Director of Recreation & Parks	Ken Baumann
Registrar of Vital Statistics	Rio Mena, CMR

BOARDS AND COMMITTEES

Due to COVID, all meetings will be virtual until further notice

PLANNING BOARD

Regular meeting 1st Tuesday of each month at 7:30 p.m.
Except for June where the meeting will be June 6th due to Election Day

ZONING BOARD OF ADJUSTMENT

Regular meeting 3rd Monday of each month at 7:30 p.m.
Except for January & February due to holidays the meeting will be on Wednesday

BOARD OF HEALTH

Regular Meetings are held on the 2nd Monday of each month at 8:00 pm
There are no meetings in July & August

LIBRARY TRUSTEES

Regular meeting 2nd Wednesday of each month at 7:30 p.m.
Meetings to be held at the Oradell Public Library.

In the event that such schedules are hereafter revised, a schedule of such revised meeting shall be posted and published as required by law.

RECREATION COMMITTEE

Regular meeting 1st Thursday of each month at 7:30 p.m.

HISTORICAL COMMITTEE

Regular meeting 4th Monday of each month at 7:30 p.m.

ENVIRONMENTAL/BEAUTIFICATION COMMITTEE

Regular meeting 1st Wednesday of each month at 7:30 p.m.

STIGMA FREE COMMITTEE

Regular meeting 4th Monday of each month at 7:00 p.m.

OPTV COMMITTEE

Regular meetings 3rd Thursday of the month at 7:00 p.m.

ECONOMIC DEVELOPMENT ADVISORY COMMITTEE

Regular meeting 2nd Wednesday of each month at 7:30 pm

SENIOR CITIZENS ADVISORY COMMITTEE

Regular meeting 3rd Thursday of every other month at 7:30 pm.

FEBRUARY



SUNDAY	MONDAY	TUESDAY	WEDNESDAY	THURSDAY	FRIDAY	SATURDAY
		1 TAXES ARE DUE Planning Board Meeting	2 Mayor & Council Work Session— 7:30pm Recycling Newspaper/Cardboard	3 Town wide Garbage	4	5 Recycling Center 9:00 am - 12:00 pm
6	7 Town wide Garbage	8	9 Library Board Meeting Recycling Commingled	10 Town wide Garbage	11	12
13	14 VALENTINE'S DAY  Board of Health Meeting Town wide Garbage	15 Mayor & Council Public Session— 7:30pm	16 Recycling Newspaper/ Cardboard	17 Town wide Garbage	18	19 Recycling Center 9:00 am - 12:00 pm
20	21 PRESIDENTS' DAY (Boro Offices & Library closed) Town wide Garbage	22	23 Zoning Board Meeting Recycling Commingled	24 Town wide Garbage	25	26
27	28 Town wide Garbage					

HISTORICAL COMMITTEE

The purpose of the Historical Committee is to recognize, catalog and preserve people, places, objects and events of historic interest to the Borough of Oradell and to provide an historic context within which the Borough may conduct its affairs.



Certified Public Accountants
Registered Investment Advisors

Specializing in Taxation
Financial Reporting
Advisory Services
Wealth Management
Estate, Tax & Financial Planning

234 Kinderkamack Road
Oradell, NJ 07649
201.262.1040 phone
201.265.7018 fax
www.tfgllc.com

MARCH



SUNDAY	MONDAY	TUESDAY	WEDNESDAY	THURSDAY	FRIDAY	SATURDAY
		1 Planning Board Meeting	2 Recycling Newspaper/ Cardboard	3 Town wide Garbage	4	5 Recycling Center 9:00 am - 12:00 pm
6	7 Town wide Garbage	8 Mayor & Council Work Session—7:30pm	9 Library Board Meeting Recycling Commingled	10 Town wide Garbage	11	12 BCUA Household Hazardous Waste Collection Foot of Empire Blvd., Moonachie 9am—3pm
13 DAYLIGHT SAVINGS BEGINS 	14 Board of Health Meeting Town wide Garbage	15	16 Recycling Newspaper/ Cardboard	17 ST. PATRICK'S DAY  Town wide Garbage	18	19 Recycling Center 9:00 am - 12:00 pm
20	21 Zoning Board Meeting Town wide Garbage	22 Mayor & Council Public Meeting—7:30pm	23 Recycling Commingled	24 Town wide Garbage	25	26
27 PALM SUNDAY	28 Town wide Garbage	29	30 Recycling Newspaper / Cardboard	31 Town wide Garbage		



Ted A. Carnevale, CPA, CGMA, MST, AEP
Partner, Co-Leader of New Jersey Market

E: tcarnevale@grassicpas.com
C: 201.410.4495
P: 201.350.5254
F: 201.806.9829

GRASSICPAS.COM



OUR FIRM IS CURRENT FROM ASSOCIATED WITH
NORTH JERSEY, NEW JERSEY, NEW YORK, AND FLORIDA

ECONOMIC DEVELOPMENT ADVISORY COMMITTEE

EDAC serves to establish educational, informational, networking or other programs authorized by the Borough for the benefit of its business community or the community at large.



APRIL



SUNDAY	MONDAY	TUESDAY	WEDNESDAY	THURSDAY	FRIDAY	SATURDAY
					1	2 Recycling Center 9:00 am - 12:00 pm
3 BCUA Household Hazardous Waste Collection Bergen Community College 400 Paramus Rd , Paramus 9am—3pm	4 Town wide Garbage	5 Planning Board Meeting	6 Mayor & Council Work Session—7:30pm Recycling Commingled	7 Town wide Garbage FIRST Grass Pickup	8	9
10	11 Board of Health Meeting Town wide Garbage	12	13 Library Board Meeting Recycling Newspaper/ Cardboard	14 Town wide Garbage Grass Pickup	15 GOOD FRIDAY & PASSOVER (Begins at Sundown) (Borough Offices & Library Closed)	16 Recycling Center 9:00 am - 12:00 pm
17 EASTER 	18 Zoning Board Meeting Town wide Garbage	19 Mayor & Council Public Meeting—7:30pm	20 Recycling Commingled	21 Town wide Garbage Grass Pickup	22	23
24 BCUA Document Shredding , Electronic/Tire Recycling Bergen Community College 400 Paramus Rd, Paramus 9am—2pm	25 Town wide Garbage	26	27 Recycling Newspaper / Cardboard	28 Town wide Garbage Grass Pickup	29	30

A. J. Vrola, Inc.
Accounting and Tax Services

Arthur J. Vrola, CFP
art@ajvrola.com

700 Kinderkamack Road
Suite 307
Oradell, NJ 07649

Phone: 201-967-1144
Fax: 201-967-1950

REMEMBER GRASS PICKUP
BEGINS THIS MONTH



ENVIRONMENTAL/BEAUTIFICATION
COMMITTEE

The committee combines preservation and protection of open space, water resources, soil and landscape with the beautification of the town through planting flowers and seasonal decorations.

MAY



SUNDAY	MONDAY	TUESDAY	WEDNESDAY	THURSDAY	FRIDAY	SATURDAY
1 TAXES ARE DUE	2 Town wide Garbage	3 Planning Board Meeting	4 Recycling Commingled	5 Town wide Garbage Grass Pickup	6	7 Recycling Center 9:00 am - 12:00 pm
8 MOTHERS DAY 	9 Board of Health Meeting Town wide Garbage	10 Mayor & Council Work Session 7:30pm	11 Library Board Meeting Recycling Newspaper/Cardboard	12 Town wide Garbage Grass Pickup	13	14 BCUA Household Hazardous Waste Collection BC Campgaw 200 Campgaw Rd., Mahwah 9am—3pm
15	16 Zoning Board Meeting Town wide Garbage	17	18 Recycling Commingled	19 Town wide Garbage Grass Pickup	20	21 Recycling Center 9:00 am - 12:00 pm
22	23 Town wide Garbage	24 Mayor & Council Public Meeting 7:30pm	25 Recycling Newspaper / Cardboard	26 Town wide Garbage Grass Pickup	27	28
29 	30 Memorial Day (Borough Offices closed) NO Town wide Garbage	31				



STIGMA FREE COMMITTEE

Oradell is proud to be committed to the Stigma Free initiative, dedicated to raising awareness of mental illness and providing support for the disease without the fear of stigma.



JUNE




SUNDAY	MONDAY	TUESDAY	WEDNESDAY	THURSDAY	FRIDAY	SATURDAY
			1 Recycling Commingled	2 Town wide Garbage Grass Pickup	3	4 Recycling Center 9:00 am - 12:00 pm BCUA Document Shredding , Electronic/Tire Recycling Bergen Campgaw 200 Campgaw Rd., Mahwah 9am—2pm
5 Farmer's Market 10 am - 3 pm Shredding Event at the Farmers Market	6 Planning Board Meeting Town wide Garbage	7 PRIMARY ELECTION Polls open 6 am - 8 pm	8 Library Board Meeting Recycling Newspaper/ Cardboard	9 Town wide Garbage	10	11
12 Farmer's Market 10 am - 3 pm BCUA Household Hazardous Waste Collection Bergen Community College 400 Paramus Rd , Paramus 9am—3pm	13 Board of Health Meeting Town wide Garbage	14 Mayor & Council Work Session 7:30pm	15 Recycling Commingled	16 Town wide Garbage Grass Pickup	17 Borough Offices Closed	18 Recycling Center 9:00 am - 12:00 pm
19  FATHER'S DAY Farmer's Market 10 am - 3 pm	20 Library Closed Zoning Board Meeting Town wide Garbage	21	22 Recycling Newspaper/Cardboard	23 Town wide Garbage Grass Pickup	24	25
26 Farmer's Market 10 am -3 pm	27 Town wide Garbage	28 Mayor & Council Public Session 7:30pm	29 Recycling Commingled	30 Town wide Garbage Grass Pickup		

RECREATION AND SPECIAL EVENTS COMMITTEES

Recreation develops new initiatives and manages existing programs as well as develops guidelines for recreational use of playgrounds and recreational facilities. Special Events organizes celebrations with the goal of fostering a social and community building atmosphere.



Volk LEBER FUNERAL HOME		
789 Teaneck Road Teaneck, NJ 07666 (201) 836-0202	268 Kinderkamack Road Oradell, NJ 07649 (201) 261-1088	
D. Matthew Leber Vice President / Manager N.J. Lic. No. 4593		
Email: info@volkleber.com		Website: volkleber.com

JULY



SUNDAY	MONDAY	TUESDAY	WEDNESDAY	THURSDAY	FRIDAY	SATURDAY
					1	2 Recycling Center 9:00 am - 12:00 pm
3 FIREWORKS Farmer's Market 10 am - 3 pm	4  FOURTH OF JULY (Borough Offices & Library closed) PARADE NO Town wide Garbage	5 Planning Board Meeting	6 Recycling Newspaper/ Cardboard	7 Town wide Garbage Grass Pickup	8	9
10 Farmer's Market 10 am - 3 pm	11 Town wide Garbage	12	13 Library Board Meeting Recycling Commingled	14 Town wide Garbage Grass Pickup	15	16 Recycling Center 9:00 am - 12:00 pm BCUA Household Hazardous Waste Collection BC Campgaw 200 Campgaw Rd., Mahwah 9am—3pm
17 Farmer's Market 10 am - 3 pm	18 Zoning Board Meeting Town wide Garbage	19 Mayor & Council JOINT meeting 7:30pm	20 Recycling Newspaper/ Cardboard	21 Town wide Garbage Grass Pick up	22	23
24 Farmer's Market 10 am - 3 pm	25 Town wide Garbage	26	27 Recycling Commingled	28 Town wide Garbage Grass Pickup	29	30
31						



Sign up at: www.Burbio.com or
download the app for **iPhone** or **Android**
AND NEVER MISS AN
EVENT AGAIN !



ZONING BOARD

Zoning Board is the board of “non-permitted” uses. It deals with the issuance of variances. The Board’s purpose is to provide relief from zoning requirements that cannot be satisfied due to the specific nature of the property in question and to approve non-permitted uses of a property by granting a Use Variance.

AUGUST



SUNDAY	MONDAY	TUESDAY	WEDNESDAY	THURSDAY	FRIDAY	SATURDAY
	1 TAXES ARE DUE Town wide Garbage	2 Planning Board Meeting	3 Recycling Newspaper/ Cardboard	4 Town wide Garbage Grass Pickup	5	6 Recycling Center 9:00 am - 12:00 pm BCUA Document Shredding , Electronic/Tire Recycling Bergen Community College 400 Paramus Rd, Paramus 9am—2pm
7 Farmer's Market 10 am - 3 pm	8 Town wide Garbage	9	10 Library Board Meeting Recycling Commingled	11 Town wide Garbage Grass Pickup	12	13
14 Farmer's Market 10 am - 3 pm	15 Zoning Board Meeting Town wide Garbage	16 Mayor & Council JOINT meeting 7:30pm	17 Recycling Newspaper / Cardboard	18 Town wide Garbage Grass Pickup	19	20 Recycling Center 9am—12pm 9:00 am to 2:00 pm
21 Farmer's Market 10 am - 3 pm	22 Town wide Garbage	23	24 Recycling Commingled	25 Town wide Garbage Grass Pickup	26	27
28 Farmer's Market 10 am - 3 pm	29 Town wide Garbage	30	31 Recycling Newspaper / Cardboard			

WILLIAM G. BASRALIAN
559 Kinderkamack Road
Oradell, N.J. 07649

BASRALIAN
FUNERAL SERVICE

201-261-0222 William G. Basralian, Manager
N.J. License No. 3173



SENIOR CITIZENS ADVISORY COMMITTEE

The Senior Citizens Advisory Committee makes recommendations to the Mayor and Council concerning issues having a significant impact upon the health, welfare and safety of senior citizens residing within the Borough of Oradell.

SEPTEMBER



SUNDAY	MONDAY	TUESDAY	WEDNESDAY	THURSDAY	FRIDAY	SATURDAY
				1	2	3 Recycling Center 9:00 am - 12:00 pm (Library Closed)
4 Farmer's Market 10 am - 3 pm Library Closed	5 LABOR DAY (Borough Offices & Library closed) NO Town wide Garbage	6 Planning Board Meeting	7 Recycling Commingled	8 Town wide Garbage Grass Pickup	9	10 BCUA Household Hazardous Waste Collection BC Campgaw 200 Campgaw Rd., Mahwah 9am—3pm
11 9/11 CEREMONY AT FIRE DEPT. Farmer's Market 10 am - 3 pm	12 Board of Health Meeting Town wide Garbage	13 Mayor & Council Work Session 7:30pm	14 Library Board Meeting Recycling Newspaper/ Cardboard	15 Town wide Garbage Grass Pickup	16	17 Recycling Center 9:00 am - 12:00 pm
18 Farmer's Market 10 am - 3 pm	19 Zoning Board Meeting Town wide Garbage	20	21 Recycling Commingled	22 Town wide Garbage Grass Pickup	23	24
25 First Day of Rosh Hashanah Farmer's Market 10 am - 3 pm	26 Town wide Garbage	27 Mayor & Council Public Session 7:30pm	28 Recycling Newspaper / Cardboard	29 Town wide Garbage Grass Pickup	30	



Sovereign Health
Medical Group

Jay S. Rosen, M.D.
Diplomate American Board of Urology
Stephen N. Zoretic, M.D.
Urology and Urological Oncology
Diplomate American Board of Urology

555 Kinderkamack Road
Suite D
Oradell, NJ 07649

Tel: 201.834.1890
Fax: 201.834.1898



OCTOBER



SUNDAY	MONDAY	TUESDAY	WEDNESDAY	THURSDAY	FRIDAY	SATURDAY
						1 Recycling Center 9:00 am - 12:00 pm
2 Farmer's Market 10am -3pm BCUA Document Shredding , Electronic/Tire Recycling Bergen Campgaw 200 Campgaw Rd., Mahwah 9am—2pm	3 Town wide Garbage	4 YOM KIPPUR Planning Board Meeting	5 Recycling Commingled	6 Town wide Garbage Grass Pickup	7	8
9 Farmer's Market 10 am - 3 pm	10 COLUMBUS DAY (Boro Offices & Library Closed) Board of Health Meeting Town wide Garbage	11 Mayor & Council Work Session 7:30pm	12 Library Board Meeting Recycling Newspaper / Cardboard	13 Town wide Garbage Grass Pickup	14	15 Recycling Center 9:00 am - 12:00 pm
16 Farmer's Market 10 am - 3 pm BCUA Household Hazardous Waste Collection Bergen Community College 400 Paramus Rd , Paramus 9am—3pm	17 Zoning Board Meeting Town wide Garbage	18	19 Recycling Commingled	20 Town wide Garbage LAST Grass Pick up	21	22
23 Farmer's Market 10 am - 3 pm	24 Town wide Garbage	25 Mayor & Council Public Session 7:30pm	26 Recycling Newspaper/ Cardboard	27 Town wide Garbage	28	29
30 Farmer's Market 10 am - 3 pm	 HALLOWEEN Town wide Garbage					
	31					



ORADELL PUBLIC TELEVISION

Oradell Public Television, also known as OPTV, serves to increase public awareness of municipal proceedings and town events through the use of the Borough's local access channel. OPTV strives to produce informative programming and expand awareness of Borough events.



201-487-0800 EXT. 16
Fax: 201-342-1597
E-Mail: gquinn@conklinandkraft.com
Web: conklinandkraft.com

ISU John C. Conklin Agency
Conklin & Kraft Agency
Lichenstein & Sher Agency
Wertheim Agency
GENERAL INSURANCE

GERARD K. QUINN
EXECUTIVE VICE PRESIDENT

746 River Road
New Milford, NJ 07646

NOVEMBER



SUNDAY	MONDAY	TUESDAY	WEDNESDAY	THURSDAY	FRIDAY	SATURDAY
		1 Zoning Board Meeting	2 Recycling Commingled	3 Town wide Garbage	4	5 Recycling Center 9:00 am - 12:00 pm
6 Daylight Savings (ends) Farmer's Market 10 am - 3 pm	7 Town wide Garbage	8 ELECTION DAY Polls open 6 am - 8 pm 	9 Library Board Meeting Recycling Newspaper/ Cardboard	10 Town wide Garbage	11 VETERANS DAY (Boro Offices and Library Closed)	12
13 Farmer's Market 10 am - 3 pm	14 Board of Health Meeting Town wide Garbage	15	16 Recycling Commingled	17 Town wide Garbage	18	19 Recycling Center 9:00 am - 12:00 pm BCUA Household Hazardous Waste Collection Foot of Empire Blvd., Moonachie 9am—3pm
20 Farmer's Market 10 am - 3 pm	21 Zoning Board Meeting Town wide Garbage	22 Mayor & Council JOINT meeting 7:30pm	23 Recycling Newspaper/ Cardboard	24 THANKSGIVING (Boro Offices and Library Closed)  NO Town wide Garbage	25 DAY AFTER THANKSGIVING (Boro Offices and Library Closed)	26
27 First Night of HANUKKAH 	28 Town wide Garbage	29	30 Recycling Commingled			



DECEMBER



SUNDAY

MONDAY

TUESDAY

WEDNESDAY

THURSDAY

FRIDAY

SATURDAY

				1 Town wide Garbage	2	3 Recycling Center 9:00 am - 12:00 pm
4	5 Town wide Garbage	6 Planning Board Meeting	7 Recycling Newspaper/ Cardboard	8 (Library closing early—5pm) Town wide Garbage	9	10
11	12 Board of Health Meeting Town wide Garbage	13 Mayor & Council JOINT meeting 7:30pm	14 Library Board Meeting Recycling Commingled	15 Town wide Garbage	16	17 Recycling Center 9:00 am - 12:00 pm
18 SANTA'S VISIT Oradell Volunteer Fire Dept. 	19 Menorah Lighting Zoning Board Meeting Town wide Garbage	20	21 Recycling Newspaper/ Cardboard	22 Town wide Garbage	23	24 CHRISTMAS EVE (Library Closed)
25 CHRISTMAS DAY (Library Closed) 	26 (Boro Offices and Library Closed) Town wide Garbage	27	28 Recycling Commingled	29 Town wide Garbage	30	31 NEW YEAR'S EVE Library closing early 1pm 

PLANNING BOARD

Planning Board can be summarized as the board of “permitted activities.” It is responsible for implementing Borough policy and for reviewing building, development and land use applications to ensure compliance with zoning, site plan and subdivision ordinances.



*Season's Greetings to all residents
from your Oradell Family!*

JANUARY



JANUARY 2023



**THE ORADELL
BOROUGH
FAMILY WISHES
YOU A VERY
HAPPY
AND
HEALTHY
NEW YEAR!**



January 2023

www.oradell.org

SUNDAY	MONDAY	TUESDAY	WEDNESDAY	THURSDAY	FRIDAY	SATURDAY
<p>1</p> <p>HAPPY NEW YEAR!</p> 	<p>2</p> <p>(Borough Offices Closed)</p> <p>Town wide Garbage</p>	<p>3</p>	<p>4</p> <p>Recycling Newspaper/ Cardboard</p>	<p>5</p> <p>Town wide Garbage</p>	<p>6</p>	<p>7</p>
<p>8</p>	<p>9</p>	<p>10</p>	<p>11</p>	<p>12</p>	<p>13</p>	<p>14</p>
<p>15</p>	<p>16</p> <p>MARTIN LUTHER KING, JR DAY (Borough offices closed)</p>	<p>17</p>	<p>18</p>	<p>19</p>	<p>20</p>	<p>21</p>
<p>22</p>	<p>23</p>	<p>24</p>	<p>25</p>	<p>26</p>	<p>27</p>	<p>28</p>
<p>29</p>	<p>30</p>	<p>31</p>				



PET LICENSES

All dogs and cats must be licensed even if your pet never leaves the house. Licenses must be renewed by **March 1, 2022**. Please notify the Health Department at 201-261-8106 if your pet is deceased or no longer living in Oradell so that we may update our files. You may obtain a **voucher** from the Health Department, for the Oradell Animal Hospital for a free rabies vaccination. The licensing fee for a spayed/neutered pet is \$10 for 1-year license and \$30 for 3-year license; not spayed/unneutered is \$15 for 1-year and \$45 for 3-year license. All fees are non-refundable. Late fees may apply. Please make checks payable to "Oradell Health Department" and enclose a completed licensing application which you may find on our website, proof of current rabies vaccination and a self-addressed stamped envelope. For a 1-year license, rabies vaccination must not expire prior to **November 1, 2022**; for a 3-year license, rabies vaccination **must not expire prior to November 1, 2024**. Pursuant to N.J.A.C. 8:23A-4.3, if your pet's vaccination expires prior to these dates it does not exempt you from licensing your pet. You must obtain a new vaccination that will be in effect throughout the required period.

BOARD OF HEALTH

The Board of Health is the foundation of Oradell's Health Department and is responsible for implementing a wide range of public health initiatives to protect the health and well-being of our residents. This Board monitors the activities of the Sanitary Inspector, who inspects all businesses that handle food and Investigates any health-related complaints. In addition, the Board of Health oversees the work of the Public Health Nurse, who administers Oradell's Health Consultation Program and runs an annual Board of Health-sponsored flu clinic.



TAX COLLECTOR

The Tax Collector prepares nearly 2,900 property tax bills, including added assessment bills and excess sewer bills and collects and deposits the revenues received. Annual tax bills are mailed as soon as the tax rate is struck by the Bergen County Tax Board. Payments are **due on or before** August 1, November 1, February 1 and May 1. Added assessment tax bills are mailed in October with payments **due on or before** November 1, February 1 and May 1. Thereafter, the added assessment is incorporated in the annual tax bill. An 8% per annum interest is charged on delinquent amounts owed up to \$1,500 and 18% per annum on amounts in excess of \$1,500 and until property taxes become current. A penalty of 6% will be charged on any delinquency in excess of \$10,000.00 if not paid by the end of the fiscal year. **Paying your taxes when due benefits you and your municipality.**

Each year a tax sale is held on properties which have become delinquent for failure to pay property taxes, special assessments or excess sewer charges from prior years. In accordance with NJ State Statutes, the tax sale may be held after January 1 of the year following the delinquency. Four weeks prior to the sale, a public advertisement is placed in the local newspaper and on the Borough website (www.oradell.org).

PAYMENT OPTIONS

- ♦ **MAIL DROP-OFF BOX** - For your convenience, a drop-off mailbox is located in the rear of the Borough Hall during business hours and after hours mail, borough business, tax payments, letters to Mayor and Council, Pet Licenses, etc.
- ♦ **ACH BANK DRAFT PROGRAM** - The Borough offers an ACH Bank Draft program (direct withdrawal) to our taxpayers. If you would like to enroll in this program, please complete the entire authorization form which is available on the Borough's website. Be sure to attach a voided check. Incomplete applications will delay enrollment. Authorization forms must be received at least 30 days prior to the due date.
- ♦ **MAIL-IN PAYMENT** - If you would like a receipt, just send a self-addressed stamped envelope with your payment. Your tax bill will be receipted and returned to you the same day.
- ♦ **ONLINE PAYMENT** - To make an online payment, visit the Borough's website (www.oradell.org) There is a processing fee for an online payment: 2.95% credit and debit cards or \$1.95 for a check.

Payments should be mailed to:
Borough of Oradell, Tax Collector
355 Kinderkamack Road
Oradell, New Jersey 07649.



TAX ASSESSOR

The Tax Assessor determines the value of all real estate property in the Borough based on State prescribed standards. The Assessor establishes the value of land and improvements, maintain ownership records and acts on applications for property tax deductions for senior citizens and veterans pursuant to State law. The Assessor's office maintains property record cards and a computer system describing each parcel of land in the Borough.

If you disagree with your assessment, you have until May 1, 2022 to file an appeal. The Bergen County Tax Board is located at Two Bergen County Plaza, 1st Floor, Hackensack, New Jersey 07601.

The Assessor is available Mondays from 4:00 pm to 6:00 pm and Tuesday from 6:30 pm to 8:00 pm. You can also reach the Tax Assessor at 201-906-2469 or leave a message at 201-261-0204.

HEALTH DEPARTMENT

The Health Department's foundation is the Board of Health, which consists of seven citizen members. The Board reviews the Health Department's activities of the previous month and the meetings are open to the public. The Board monitors the activities of the part-time Sanitary Inspector Health and the Public Health Nurse. The Sanitarian inspects all businesses which handle food, inspects vending machines and investigates any health related complaints. The Public Health Nurse administers the Health Consultation Program on the first Thursday and third Tuesday of the month.

The Registrar of Vital Statistics issues marriage licenses, burial permits, and certified copies of vital records for birth, death and marriage. Monday, Wednesday and Friday 9:00 a.m. to 3:00 p.m.; Tuesday and Thursday by appointment only at 201-261-8106.



The Borough is under contract with the Bergen County Animal Shelter to provide an animal warden. All dogs and cats are required to be licensed when they reach the age of **seven months** and licenses must be renewed by **March 1**, of each year. Free 1-year or 3-year rabies inoculations are available, please feel free to call 201-261-8106 to request your voucher.

Vouchers can only be used at the Oradell Animal Hospital in Paramus.

Flu Clinic

The Health Department will offer influenza vaccine injections to Oradell residents 65 and older. Please bring identification and Medicare/Insurance card. The date will be posted at www.oradell.org and the bulletin board in Schirra Park. HMO members are required to go to their own primary care physician.

Health Consultation Program



Senior citizens can take advantage of a free Health Consultation Program administered by Bergen County's Public Health Nurse every first Thursday and third Tuesday of each month. Consultations are held at Oradell's Senior Center. Consultations are available by calling (201) 261-8106 to make an appointment.



POLICE DEPARTMENT

The Oradell Police Department consists of twenty-three sworn Police Officers, one class I Special Officer, and one police secretary. There are also eleven school crossing guards. The police department activities are many, including patrol, criminal investigations, traffic control, youth service and crime prevention. The patrol vehicles are equipped with computers to access vehicle and criminal files.

The emergency equipment includes resuscitators and defibrillators, for which the entire patrol division is trained. The Police Department established a Community Policing Program, which includes officers that can assist senior citizens and can provide information on scams and phone callers that target the elderly. The officers are available to address any group that requests it and are making a special effort to help our local residents and business community. The Police Department has a Medicine Dropbox where 24 hours a day and 365 days a year, residents can dispose of their unused or excess medications.

**Please note: The Overnight Parking Ordinance is:
NO Overnight Parking between the hours of 2 AM & 5 AM.**

The Police Department website still has the online overnight parking feature that residents can access to enter their vehicles that will be parked on the street during the overnight hours. Permission will generally be granted with the exception of the nights when there is inclement weather. Residents can visit our website at www.oradellpolice.com.

You can contact the Oradell Police Department at (201) 261-0200.



MUNICIPAL COURT

In April 2015, the Borough of Oradell entered a Shared Court Service with the Borough of Paramus. Court dates are generally 2nd and 4th Thursdays of the month, but may be subject to change. **ORADELL MUNICIPAL COURT IS HELD AT PARAMUS BOROUGH HALL, 1 Jockish Square, Paramus NJ 07652.** Oradell Municipal Court participates in the New Jersey Judiciary's Internet information and payment center. Most parking and moving violations may be paid via the internet by logging onto www.NJMCdirect.com.

TALKING OR TEXTING WHILE DRIVING can result in \$200-\$400 fine for the first offense; \$400-\$600 fine for the second offense; and \$600-\$800 for third or subsequent offenses. In addition, for a third or subsequent offense, the court may order you to forfeit the right to operate a motor vehicle over the highways of NJ for a period of 90 days in addition to being assessed three motor vehicle penalty points. N.J.S.A. 39:4-97.3.



OFFICE OF EMERGENCY MANAGEMENT

The Office of Emergency Management is responsible for mitigation efforts to eliminate or reduce the impact or exposure to disasters or catastrophes; plan and practice for emergencies and disaster; respond to these events by coordinating Borough agencies during these events, including obtaining assistance of County and State resources and coordinate any recovery efforts from disasters, including establishing disaster relief centers and shelters should the need arise.



FIRE DEPARTMENT

Interested in joining the fire department? Our department has nearly 125 years of history and tradition and we are always looking for new members. Our department is 100% volunteer—that means that our newest member all the way up top Chief of Department is here to serve and protect the community as a volunteer. The countless hours and efforts that our members contribute to the community, does not go unnoticed or unrewarded. Some of the membership incentives and rewards include:

- Local, State & Federal Training, expenses covered by the department
- Personal Protective Equipment, Uniform and training are all provided to you
- Length of Service Awards Program—Similar to a 401k that the Borough contributes to annually
- Yearly Clothing Allowance - help repair & replace damaged personal items
- An outstanding opportunity to volunteer in your town

Our department is currently seeking members to fill our roster in the following categories:

Regular Membership—18 years or older. Responds to fire calls and actively participates in training, meetings, and committee work. Members are required to be residents of Oradell or an adjacent town. A Physical must also be completed by your physician. All new members are required to attend a state certificated fire training academy to obtain their New Jersey Basic Firefighting Certificate. The Bergen County Fire Academy in Mahwah, NJ currently runs this class several times a year. This class currently runs for 6 months, with classes held in the evening 2 times a week.

Day Membership— 18 years or older. Responds to fire calls and actively participates in training. Members must be employed within the Borough of Oradell and a regular member of another fire department.

Junior Membership— 16-21 years old. Responds to fire calls and actively participates in training. Members must be residents of Oradell and are preparing to become Regular Members. A physical must also be completed by your physician.

For more information, please contact JoinOFD@oradell.org



Oradell ALERT
Sign up to
receive alerts

POWERED BY: **RAVE**
RADIO ALERTING VIA EMERGENCY

NEW for 2022 - THIS SERVICE IS REPLACING NIXLE



Emergency alerts and notifications via

Phone call, text message, email and social media



Sign Up Now

To sign up visit:

www.oradellalert.com

Oradell is switching to
RAVE

Stay informed....
be sure to sign up to
receive notifications &
emergency alerts.

DEPARTMENT of PUBLIC WORKS

The 17 employees of the Department of Public Works are responsible for the maintenance of roads, sewers, parks and playgrounds, shade trees, recycling and all Borough owned vehicles and equipment. The road crew is responsible for repairing and sweeping the 57 miles of Borough streets, maintaining street and traffic signs and Borough parking lots. The Borough storm drain system is also maintained by the road crew. Sanitary sewer lines, manholes and two pumping stations are also maintained by the DPW. All manholes and sewer lines are checked on a regular basis, and problem lines are cleaned as needed. **ANY RESIDENT EXPERIENCING A SEWER BACKUP SHOULD CALL THE DEPARTMENT TO DETERMINE IF THE PROBLEM IS IN THE BOROUGH SEWER LINE BEFORE CALLING AN OUTSIDE CONTRACTOR.** The DPW is only responsible for cleaning and maintaining Borough owned sewer mains, not individual service laterals.

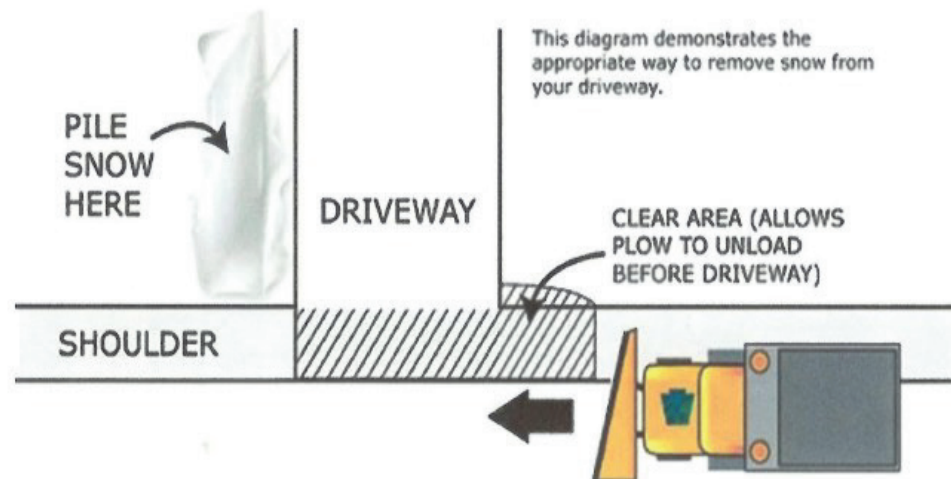
Eight ball fields and tree parks are mowed, cleaned, fertilized and kept free of insects and diseases. To report fallen branches or trees, call the DPW at (201) 261-8610, Monday through Friday from 7:30 AM to 3:15 PM, or call the Police Department after normal working hours. From mid-October to mid-December, the DPW picks up approximately 7,500 cubic yards of leaves and transports the leaves to an approved recycling depot.

Snow removal from Borough streets is a major function of the DPW. At the beginning of a storm, four salt spreaders are dispatched to salt main arteries and hills. When there is a 2 inch accumulation, ten plows and four salt spreaders are used to clear and de-ice streets. Under a contract with Bergen County, our DPW plows County roads in the Borough and is reimbursed for the cost of labor and materials. Residents can assist Borough snow removal operations by not parking on Borough streets during a snow storm. Residents are advised to remove basketball hoops from the right-of-way along the roadways. This may interfere with our plowing or leaf collection operations and the Borough will not be responsible for damages to these structures. Residents are responsible for removing snow from their sidewalks within 12 hours of daylight after it has fallen pursuant to Borough Code #224-1.

DON'T THROW SNOW ON THE STREETS

It's against Borough Code to shovel or plow snow in to the streets

The reason it is prohibited is because as the snow melts and refreezes, it causes icy spots which can cause accidents. During a snow storm, plows concentrate on keeping streets clear. **After the storm, the plows will return to widen and clear shoulders.** This can result in a freshly cleared driveway being filled with snow again. It won't happen, however, if you clear the driveway as shown in the diagram.



CODE ENFORCEMENT



The Code Enforcement Agency office serves as the central permit office for processing all the applications for construction in the Borough in accordance with the provisions of the New Jersey Uniform Construction Code.

The Construction Official serves as the Chief Administrator of the Code Enforcement Agency and is assisted by the technical assistant and the various sub-code officials who are responsible for the administration and enforcement of their respective sub-codes.

Enforcement of various codes is the department's primary responsibility. These include the International Construction Code, International Mechanical Code, National Standard Plumbing Code, the National Electrical Code and Uniformed Fire Code.

The Building Department enforces the Borough zoning ordinance in cooperation with the Health Department, and also enforces conditions imposed by the Board of Adjustment and the Planning Board. In addition, it acts as coordinating agency for the Bergen County Soil Conservation District and the County Planning and Economic Development Board in review of subdivisions and plans.

This office also issues permits and collects fees for filming permits, real estate sign permits, driveway, fence and sidewalk permits. Please call the Building Department regarding when permits are required and for any general questions at (201) 261-8005.



SOLID WASTE

Household Garbage: Garbage will be picked up Monday and Thursday curbside twice a week all year long. See the schedule included with the calendar and download recyclecoach app on your smartphone or go to Oradell.org for any changes. Containers may be placed at the curb after 5:00 PM on the day prior to regular collection and must be removed before 7:00 PM on the day of collection (Borough Code Chapter 1906 "Property Maintenance"). No more than five (5) covered containers weighing a maximum of 60 lbs. each will be picked up on any collection day. Furniture and mattresses are to be put out with regular garbage on your *second* weekly pickup. No more than one to two pieces at a time. **Appliances, metal items, and computer items are recycled and cannot be put out with regular garbage (see Recycling for more information).**

Construction debris, concrete, fencing and debris from home remodeling projects cannot be disposed of with household trash. The resident is responsible for disposing of these items at their own expense.



Vegetative Waste, Grass Clippings Tree Branches, and Twigs: These items are picked up curbside on Thursdays from April through October. They must be placed in open containers or biodegradable bags (**no plastic bags accepted**); branches must be no longer than 4 ft. in length and must be bundled and tied, a maximum of 5 bundles per pickup. The schedule is included in the calendar and is posted on the website and the Recyclecoach App. Containers may be placed at the curb after 5:00 PM on the day prior to regular collection and must be removed before 7:00 PM on the day of collection (Borough Code Chapter 1906 "Property Maintenance"). No more than five (5) containers weighing a maximum of 60 lbs. each will be picked up on any collection day.



Autumn Leaf Collection: Leaf pickup will commence in mid-October and continue through December. Only leaves and grass are permitted, no branches, sticks, rocks or debris of any kind. Leaves should not be placed within 10 feet of a storm drain outlet.

Christmas Trees will be picked up curbside during the month of January. Please remove any plastic bags, lights and ornaments. Wreaths or any other holiday greenery should be disposed of with regular garbage.



Occasionally, changes are made to the calendar and residents are advised electronically. To receive electronic notifications of these changes via email and/or text messages, residents are encouraged to sign up for both recyclecoach and www.nixle.com.

RECYCLING



The Borough of Oradell provides once a week curbside pickup of commingled and newspaper/cardboard (alternating weeks) on Wednesday. See the schedule included with the calendar and download recyclecoach app on your smartphone or check the Borough website, www.oradell.org, for any changes. The Borough also operates a drop-off recycling center for the disposal of the following materials only: plastic, glass, aluminum, newspaper, cardboard, metal items, vegetative waste, electrics, Styrofoam, clean plastic bags and used clothing bins.

The recycling center is located on Marginal Rd. and is for Oradell residents ONLY. The center is open from 10:00 am to 3:00 pm Monday – Friday and on the 1st and 3rd Saturday of each month from 9:00 am to 12:00 noon for your convenience. This recycling center is not available to contractors, businesses or non-residents.

Household batteries can be discarded with regular household waste. They are not recyclable.



Construction debris, concrete, fencing and debris from home remodeling projects are not accepted at our recycling center. The resident is responsible for disposing of these items at their own expense.



Household hazardous waste items are not accepted at our recycling center. The Bergen County Utilities Authority (BCUA) schedules hazardous waste, tire collections and paper shredding several times a year. For a list of dates and acceptable materials, please call (201) 807-5825, visit their website at www.bcua.org or download Recyclecoach app for your smartphone.

Large metal items (i.e. appliances and electronics) are picked up on Mondays by appointment only. Please call the Department of Public Works at (201) 261-8610. Leave a message to schedule an appointment.

Occasionally, changes are made to the calendar and residents are advised electronically. To receive electronic notifications of these changes via email and/or text messages, residents are encouraged to sign up on recyclecoach app and www.nixle.com.

LOCATIONS FOR HAZARDOUS WASTE, TIRES & PAPER SHREDDING

Bergen Community College
400 Paramus Road, Paramus

Campgaw Mountain Reservation
200 Campgaw Road, Mahwah

www.bcua.org or 201 807-5825



DOWNLOAD RECYCLECOACH APP ON YOUR SMARTPHONE



RECREATION FACILITIES AND PROGRAMS

Please check the Parks and Recreation Page of the Borough Website for updates and more information or contact the Recreation Dept. 201-261-8200 ext. 243



Recreation Facilities:

Please note: Any group of 20 is required to obtain a permit to use any Park or Recreation facility in the Borough. Forms are available on the Borough website.

- ♦ **Doug Parcells Athletic Complex:** Synthetic turf field that accommodates baseball, softball, football, lacrosse and soccer on Ridgewood Avenue. Besides the field house there is also a newly installed all inclusive playground.
- ♦ **Grant Field:** T-Ball and a Little League baseball field, a basketball court, and a newly installed children's playground.
- ♦ **Hoffman Field:** Little League baseball field, a lighted basketball court and children's playground equipment
- ♦ **Memorial Field:** Is the largest facility. It has a Little League baseball field, softball field, full sized baseball field, 2 soccer fields, two lighted basketball courts, five lighted tennis courts, a lighted tennis practice/handball wall, a lighted skating pond, playground equipment, picnic area and field house.
- ♦ **Tennis Courts** Open from March 15th – November 15th.
- ♦ **Ice Skating Ponds** will be open as conditions permit. Check Borough Website for updates.
- ♦ **Pickle Ball**—coming in Spring 2022!!!

Recreation Events and Programs:

Please visit Borough Website for updates throughout the year.

Coaches Requirements:

All volunteer coaches in the Borough of Oradell **MUST** comply with ALL State and Borough requirements. Currently these requirements are State issued Background Check; 3-hour Safety Course and a Concussion Awareness Certification. More information can be found on the Parks and Recreation Page of the Borough Website. In addition, all Coaches and Participants must sign a Code of Conduct.

NEW TO TOWN??? Email our Recreation Director at kbaumann@oradell.org

YOUTH SPONSORED LEAGUES

Winter Leagues:

Oradell Basketball Programs

Oradell Boys & Girls Grades K– 8th
5th Grade -8th Grade Travel (Try-Out)
www.oradellbasketball.com



River Dell Junior Wrestling

Oradell & River Edge Boys & Girls Grades 2rd– 8th
www.rdwrestling.com

Spring Leagues:

Oradell Little League & Girl's Softball

Oradell Children Ages 5 - 15 as of April 30th
Tee Ball 5 for children entering Kindergarten.
www.OradellLittleLeague.com

River Dell Lacrosse Association

Oradell & River Edge Boys & Girls Grades 3rd– 8th
www.riverdelllacrosse.com

Oradell Tennis

New program for Boys & Girls Grades 3rd– 8th
www.oradelltennis.org

Fall Leagues:

River Dell Soccer Association

Oradell & River Edge Boys & Girls Grades K– 8th
www.riverdellsoccer.net

River Dell Jr. Football

Oradell & River Edge Boys Grades 2rd– 8th
LITTLE HAWKS- Incoming K & 1st Graders
www.eteamz.com/RiverDellHawksFootball

River Dell Cheerleading

Oradell & River Edge Girls Grades 2rd– 8th
www.leaguelineup.com/rdjuniorcheer

ORADELL SENIOR CITIZENS

The Oradell Senior Center, located at 1 Veterans Pl in Oradell (behind the Post Office).

Visit www.oradell.org & click SENIORS to see more details. Email seniors@oradell.org or call 201-649-9271 for more information.



TRANSPORTATION FOR SENIORS AND DISABLED INDIVIDUALS

Our Senior Van is available to transport Oradell seniors and Oradell disabled individuals Tuesday and Thursdays to any medical appointments (9am-4pm) and Wednesdays to the New Milford ShopRite for groceries.

Please call (201) 649-9271 for more information or to schedule a pick up/drop off.



ORADELL PUBLIC LIBRARY

375 Kinderkamack Road, 201-262-2613

www.oradell.bccls.org

The Power of Your Card

An Oradell Public Library card is your key to a wonderful array of products and services, all aimed to serve you, the Oradell resident. Use your card to gain access to the latest best sellers in books and audio, hot new music from your favorite artists and blockbuster DVDs, and Great Courses, not only from Oradell Public Library and but also from all the other 76 libraries in BCCLS (Bergen County Cooperative Library System). Your card gives you the power to access magazines, e-books, Ancestry.com, and all of our other databases. With your library card, you can request and even renew items from your home! You can borrow an e-reader or Wireless Hotspot! You have access to our fantastic Museum Pass Program! Besides the latest issues in print, even magazines are available online and on your phone – all with the power of your library card. During the pandemic shutdown an Oradell Public Library card was a lifeline to many of our residents in accessing information and e-resources, and our virtual programs were open to all.

The Children's World

Raising a reader is fun, rewarding, and easy when you have access to the Junior Room at the Oradell Public Library. We offer a variety of current materials and an assortment of programs for toddlers all the way through to young adults. From the board books, picture books, early readers, popular reading series, DVDs, graphic novels (classics, non-fiction, memoirs), Tween books, and Young Adults (YA) literature in their own space. The teens that use our services appreciate the respect and independence provided in the YA Room. Reading is all about growing and learning. The Junior Room is equipped with computers and laptops for the patrons to use. Teens are invited to join our Teen Advisory Board, "The Crew," to help create programs for the younger children, become peer readers, join book clubs, and build a community of teens in the library. Visit the Junior Room to explore the books and the world where reading is fun and helping our patrons grow in many ways! Reading and love of books is a life-long pursuit.

Adult Services

Who knew that Oradell is the home to so many famous people? We have a collection of books by past and present Oradell authors and materials about famous Oradell residents. The history of our town is fascinating - come in and check out a book for yourself or make an appointment to see the Local History Archive. While you are here, check your e-mail or join one of our book clubs or the IFC Film Club for film discussions. Need help with computers or a job search? Make an appointment for a lesson. We love to see our residents enjoying our various and ever-changing displays. Want to get away from it all for a bit? Come in and pick up one of our magazines and sit and read in the most beautiful library in Bergen County (at least we think so)! Or, check out Getaways on Display, a full selection of travel magazines and brochures. Our staff is here to serve you and your library needs!

Support Your Library!

Join the Friends of the Oradell Public Library, a group of dedicated volunteers, who are committed to bringing the best programming to Oradell! The Friends bring us the most amazing programs, including important information about our environment, travel, mental health awareness, history, and the arts. They show and discuss films, set up play readings, and arrange visits and talks with local and national celebrities. Please consider joining this group who are dedicated to the development and promotion of library services to the community. We need your help and your great ideas. The Friends meet the first Tuesday of the month at 7:00 p. m. Our Board of Trustees is comprised of amazingly talented people. The Board meets the second Wednesday of each month at 7:30 p. m., virtually for the time being.

Our website is your go-to place for all the latest information, so click on us at www.oradell.bccls.org. Ask to join our listserv! Like us on Facebook! Follow us on Instagram!

THE BOROUGH OF ORADELL COMMITTEES

If you are an Oradell resident and interested in becoming a volunteer on any of our committees, please contact Mayor Dianne Camelo Didio at mayor@oradell.org or send her a letter stating your interest:



Mayor Dianne Camelo Didio
Borough of Oradell
355 Kinderkamack Road
Oradell, NJ 07649

Board of Health

Economic Development Advisory

Environmental / Beautification

Historical

IT Committee

OPTV

Planning Board

Recreation Committee

Senior Citizen Advisory

Special Events

Stigma Free

Trustees of the Library

Zoning Board

LIBRARY EVENTS

Evening Book Club meets the 3rd Wednesday at 7 pm

Morning Book Club meets the last Tuesday at 11 am

Cookbook Club meets the 3rd Tuesday at 7 pm

IFC Film Club meets the 4th Monday at 7 pm

*** Visit the library website for more information ***

LIBRARY BOARD

Sheila Sterling, President

Eileen Gabriele, First Vice-President

James Lessersohn, Second Vice-President

TBD, Secretary

Anne Sullivan, Treasurer

Joseph Colella

Susan Jung

Jessica Holmes

Miriam Yu, Council Liaison

Eric Mangol, School Liaison

RIVER DELL REGIONAL SCHOOL DISTRICT

The River Dell Regional School District was opened on September 1, 1956, and encompasses the two Boroughs of Oradell and River Edge serving students in grades 7 through 12. The total current enrollment is 1,603 students. The district operates two schools: the River Dell Middle School on Woodland Avenue in River Edge (grades 7 & 8) and the River Dell High School on Pyle Street in Oradell (grades 9, 10, 11 & 12). The curriculum is structured so that grades seven and eight form a preparatory period for the ensuing four years during which the student follows a suggested curricular pattern based on his/her career interest and post-secondary plans, as well as the Core Curriculum Content Standards.

The high school offers a broad program including Honors and Advanced Placement programs, guidance and special educational services. An interdisciplinary approach with team teaching is featured in several middle and high school courses.

Students are grouped for instruction in academic subjects. A variety of methods and different approaches are utilized by a highly educated, experienced staff; computer assisted instruction; students tutoring other students and diagnostic-prescriptive teaching to help meet the students' needs.

The River Dell Regional High School is a comprehensive high school which offers subjects that will prepare students to reach many different goals. River Dell sends approximately 94% of its students on to college; 85% of the class of 2021 was admitted to a four-year college. The average math score was 605 and the average reading score was 594.

The Board of Education consists of nine members who are elected to serve over-lapping three-year terms of office. There are four members elected from Oradell and five from River Edge.

Current members of the Board and the expiration dates of their terms are:

Tracey-Ellen Ehalt—River Edge.....	2023
Annette Farelli.....	2024
Alan Feigenson—Oradell.....	2022
Albert Graef—Oradell.....	2023
Stephanie Hartman—River Edge.....	2022
Barbara Kuchar—Oradell.....	2022
Douglas Kupfer—River Edge.....	2023
Claudia O'Neill—River Edge.....	2024
John Samuel—Oradell.....	2024
Mr. Patrick J. Fletcher.....	Superintendent of Schools
Mrs. Trude Engle.....	Business Administrator/Board Secretary

The 2021-2022 school budget totals \$37,066,056 while the local tax levy equals \$32,061,783. The district is supported on the basis of equalized assessed valuations. Oradell contributes 49.1% while River Edge pays 50.9%.

The Board employs approximately 233 teachers, secretaries, custodians and administrators. Ninety percent of the annual budget is funded by local taxes.

The River Dell Board of Education normally meets on the second and fourth Monday of the month for Executive and Regular Sessions at 8:00 PM, in the high school media center. The public is always invited to participate.

ORADELL PUBLIC SCHOOL DISTRICT

The Oradell Public School District provides high quality educational services to children in Pre-K through sixth grade within a single school facility. It is the mission of the Board and faculty to inspire life-long learning in students through the development of comprehensive, innovative curricula and instruction. Programs are designed to maximize student potential, develop responsible citizens, and promote respect for the unique skills and talents of all individuals. To complement these efforts, the Oradell PTA and Oradell Kids Foundation implement mini-grant programs that provide a variety of special activities and programs for students. The district also works in collaboration with the River Edge and River Dell districts to craft common curricula and professional development in order to enhance educational continuity across all grade levels.

The Oradell School web site provides a wide variety of school and Board of Ed. Information, as well as a wealth of learning resources for children, teachers, and parents. The community is encouraged to log-on to www.oradellschool.org to catch a glimpse of school resources and operations.

Regular meetings of the Board of Education are open to the public and are typically scheduled on the second and fourth Wednesdays of each month, with a few exceptions. Meetings are held in the school's auditorium at 350 Prospect Avenue and begin at 7:30 PM. A meeting schedule, meeting agenda, and recordings of past Board meetings can be accessed via the district web site.

Current Board of Education members are:

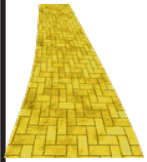
Dorothy Watson-Nichols	Alena Acosta
Jeremy Griffin	Katherin Norian
Greg Derian	Nancy Shapiro
Rita Walker	John Walsh

Megan Bozio, Superintendent
John M. Marmora, Business Administrator
Michelle Hawley, Principal

Oradell Public School District:
Our children, our hope, our future.



Important Reminders



Property Maintenance Notice Properties in the Business District

Please review the information below.

§190-6 Maintenance standards.

K. Maintenance of the street between the property line and curb. Every owner, occupant or person having charge or control of property on any street in the Borough shall maintain and be responsible for the proper upkeep of that part of the street or public right-of-way located between the property line and the curb or street which abuts the property, including corner areas adjacent to corner lots, whether within the property or not. Maintenance shall include landscape ground cover, construction of and/or repair of hazardous sidewalk, removal of debris and litter. The aforementioned area shall not be paved by the owner, occupant or person having charge or control unless specifically authorized by the enforcement official in writing.

Any questions, please contact the Building Department at (201) 261-8005



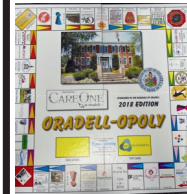
Property Maintenance Notice

When it is permitted to put garbage out for pickup?

§190-6 Maintenance standards

J. No garbage, refuse, rubbish, containers or receptacles for the aforesaid or any articles or materials for removal by a waste collector shall be placed or permitted to remain forward of the building line of any premises or at the curb in the Borough for collection, except **between 5:00 p.m. of the day preceding the collection day and 7:00 p.m. of the collection day.**

ORADELL-OPOLY



Visit Borough Hall's Clerks Office or the Oradell Public Library to purchase your very own copy of Oradell-opoly.

\$40.00 per game—perfect holiday gift or housewarming

A message from the County regarding the Oradell Ave Bridge—

Dear Oradell residents,

We need your input!! Bergen County, the North Jersey Transportation Planning Authority (NJTPA) and the NJDOT are conducting a Local Concept Development (LCD) study to determine the appropriate future improvements to the Oradell Avenue Bridge over the Hackensack River. Public input is a vital part of the project's success. Please visit www.OradellAvenueBridge.com and learn more, today.



OVERNIGHT PARKING

§ 280-17 Overnight parking.

No vehicles shall be parked or placed on any street in the Borough between the hours of 2:00 a.m. and 5:00 a.m.



EMERGENCY NO PARKING

A new § 280-53.1 entitled “Emergency No Parking; Declaration” be created as follows:

A. Upon the declaration of an emergency to any event, emergency, extraordinary weather event/storm and/or snow/ice event issued by the Borough of Oradell, the Office of Emergency Management of the Chief of Police of his/her designee or the officer in charge of the tour, there shall be no parking on any street or roadway in the Borough of Oradell. All emergency vehicles and public utility vehicles are exempt from this section.

B. The Oradell Police Department is authorized to have any vehicles found in violation of this section towed at the vehicle owner's expense. Any person who is found guilty in violation of this section shall be fined a penalty of not less than \$50.00 and not more than \$300.00.

A new § 280-53.2 entitled “Emergency No Parking and Non-Essential Traffic; State of Emergency” be created as follows:

A. Upon the declaration of a state of emergency by the Governor of New Jersey or his/her designee there shall be no non-essential vehicular traffic on any street or roadway in the Borough of Oradell. All emergency vehicles and public utility vehicles are exempt from this section.

B. The Oradell Police Department is authorized to have any vehicles found in violation of this section towed at the vehicle owner's expense. Any person who is found guilty in violation of this section shall be fined a penalty of not less than \$50.00 and not more than \$300.00.



THIS CALENDAR IS PUBLISHED BY THE BOROUGH OF ORADELL
FOR PUBLIC INFORMATION PURPOSES.
ADVERTISING REVENUES ARE USED TO OFFSET PRINTING COSTS.
WE GRATEFULLY ACKNOWLEDGE THE SUPPORT OF OUR ADVERTISERS.

ACCOUNTING & TAX SERVICES

A. J. Vrola, Inc.

700 Kinderkamack Road #307, Oradell (201) 967-1144

CERTIFIED PUBLIC ACCOUNTANTS

Grassi Advisors & Accountants

(201) 350-5254

One Maynard Dr, Suite 2203

Park Ridge, NJ 07656

Traphagen Financial Group

234 Kinderkamack Rd., Oradell (201)262-1040

FUNERAL SERVICES

Basralian Funeral Home

(201)261-0222

559 Kinderkamack Road, Oradell

Volk Leber Funeral Home

(201)261-1088

268 Kinderkamack Road, Oradell

INSURANCE

Conklin & Kraft Agency

(201) 487-0800

Gerard K. Quinn, x16, gquinn@conklinandkraft.com

MEDICAL

Sovereign Health

(201) 834-1890

555 Kinderkamack Road, Oradell

LIFESTYLE

River Dell Flowers

241 Kinderkamack Road, Oradell (201) 262-8118

Michael Mariotti Interior Design

537 Kinderkamack Road, Oradell (917) 499-9982

ZONING PERMITS SNOW AND ICE REMOVAL

ZONING PERMIT - WHEN & WHY NEEDED

A Zoning Permit is required for any change to a property covered under the current zoning ordinance and the provisions of the Land Use Code (Chapter 240). Some items that would require a Zoning Permit include, but are not limited to: Sheds, Fences, Driveways, Patios, Gazebos, Hot-Tubs, Generators, Retaining Walls, Signs and Awnings, AC Units or any structure or permanent item intended to be constructed and or placed on a property.

A Zoning Permit is a "prior approval" which is needed before certain types of construction can be approved. It includes but is not limited to: New Construction, Additions, Add-A-Levels, Decks, Swimming Pools, etc.



A Zoning Permit is required for any proposed change in business uses.

In order to obtain Zoning Permit approval, you must complete a Zoning Review Application in the Building Department or on line at www.oradell.org to the Building Department main page at the bottom of the page.

The form must be completed, include a copy of your survey/plot plan (no more than 5 years old, and a scale of 1:10 or 1:20) showing the proposed construction drawn to scale and highlighted on the survey.

Be sure the survey reflects and additions/deletions made since the date of survey. Make sure your name and address appears clearly on the survey. You will be notified of your approval (by phone or mail) or denial (by mail).

There is a \$50.00 application fee which must be submitted with your zoning review/permit application.

If you have any questions, please don't hesitate to call the Building Department at (201) 261-8005.

SNOW AND ICE REMOVAL

CHAPTER 224 of the Borough Codes

Responsibilities of Landowners or tenant.

Every owner or tenant of any lands abutting upon the public streets within the Borough shall remove all snow and ice from the abutting sidewalks of such streets within 12 hours of daylight after the same shall have fallen or have formed thereon.



SENIOR SNOW SHOVELING PROGRAM

Oradell will once again be offering assistance to our Senior Citizens with Snow Shoveling. We are gather a list of willing and able students to help with clearing the snow off your walkway, sidewalk, driveway or front stoop. Please contact Oradell Recreation Department or Clerks office for more information.

**Support Your
Local Businesses!**





2022 TOWN SIDE GARBAGE / RECYCLING SCHEDULE



	GARBAGE	GRASS PICKUP	RECYCLING	Notes		GARBAGE	GRASS PICKUP	RECYCLING	Notes
<u>WEEK OF</u>	<u>Townwide</u>	<u>Thursday</u>	<u>Wednesday</u>	<u>-</u>	<u>WEEK OF</u>	<u>Townwide</u>	<u>Thursday</u>	<u>Wednesday</u>	<u>-</u>
January 4, 2022	Monday & Thursday		Newspaper/Cardboard		July 4, 2022	Thursday Only	Thursday	Newspaper/Cardboard	4th of July
January 10, 2022	Monday & Thursday		Commingled		July 11, 2022	Monday & Thursday	Thursday	Commingled	
January 17, 2022	Monday & Thursday		Newspaper/Cardboard		July 18, 2022	Monday & Thursday	Thursday	Newspaper/Cardboard	
January 24, 2022	Monday & Thursday		Commingled		July 25, 2022	Monday & Thursday	Thursday	Commingled	
January 31, 2022	Monday & Thursday		Newspaper/Cardboard		August 1, 2022	Monday & Thursday	Thursday	Newspaper/Cardboard	
February 7, 2022	Monday & Thursday		Commingled		August 8, 2022	Monday & Thursday	Thursday	Commingled	
February 14, 2022	Monday & Thursday		Newspaper/Cardboard		August 15, 2022	Monday & Thursday	Thursday	Newspaper/Cardboard	
February 21, 2022	Monday & Thursday		Commingled		August 22, 2022	Monday & Thursday	Thursday	Commingled	
February 28, 2022	Monday & Thursday		Newspaper/Cardboard		August 29, 2022	Monday & Thursday	Thursday	Newspaper/Cardboard	
March 7, 2022	Monday & Thursday		Commingled		September 5, 2022	Thursday Only	Thursday	Commingled	Labor Day
March 14, 2022	Monday & Thursday		Newspaper/Cardboard		September 12, 2022	Monday & Thursday	Thursday	Newspaper/Cardboard	
March 21, 2022	Monday & Thursday		Commingled		September 19, 2022	Monday & Thursday	Thursday	Commingled	
March 28, 2022	Monday & Thursday		Newspaper/Cardboard		September 26, 2022	Monday & Thursday	Thursday	Newspaper/Cardboard	
April 4, 2022	Monday & Thursday	Thursday	Commingled	First Grass	October 3, 2022	Monday & Thursday	Thursday	Commingled	
April 11, 2022	Monday & Thursday	Thursday	Newspaper/Cardboard		October 10, 2022	Monday & Thursday	Thursday	Newspaper/Cardboard	
April 18, 2022	Monday & Thursday	Thursday	Commingled		October 17, 2022	Monday & Thursday	Thursday	Commingled	Last Grass
April 25, 2022	Monday & Thursday	Thursday	Newspaper/Cardboard		October 24, 2022	Monday & Thursday		Newspaper/Cardboard	
May 2, 2022	Monday & Thursday	Thursday	Commingled		October 31, 2022	Monday & Thursday		Commingled	
May 9, 2022	Monday & Thursday	Thursday	Newspaper/Cardboard		November 7, 2022	Monday & Thursday		Newspaper/Cardboard	
May 16, 2022	Monday & Thursday	Thursday	Commingled		November 14, 2022	Monday & Thursday		Commingled	
May 23, 2022	Thursday Only	Thursday	Newspaper/Cardboard	Memorial Day	November 21, 2022	Monday Only		Newspaper/Cardboard	Thanksgiving
May 30, 2022	Monday & Thursday	Thursday	Commingled		November 28, 2022	Monday & Thursday		Commingled	
June 6, 2022	Monday & Thursday	Thursday	Newspaper/Cardboard		December 5, 2022	Monday & Thursday		Newspaper/Cardboard	
June 13, 2022	Monday & Thursday	Thursday	Commingled		December 12, 2022	Monday & Thursday		Commingled	
June 20, 2022	Monday & Thursday	Thursday	Newspaper/Cardboard		December 19, 2022	Monday & Thursday		Newspaper/Cardboard	
June 27, 2022	Monday & Thursday	Thursday	Commingled		December 26, 2022	Monday & Thursday		Commingled	
					January 2, 2023	Monday & Thursday		Newspaper/Cardboard	

Social Services

Residents seeking aid please contact the **County Board of Social Services**, located at 216 Route 17 N, Rochelle Park - Please call (201) 368-4200

HOW TO APPLY FOR ASSISTANCE

In –Person: The agency is open from 8:00am—4:30pm. Weekdays. You may come in person and complete a screening tool for our programs. After completing the screening tool, and depending upon the program(s) you appear to be eligible to apply for, you will either be seen the same day or you will receive an appointment for a phone or in-person interview. Please note that the number of appointments available on a daily basis is limited and are assigned on a first come first serve basis.

On-line: You may complete an application on-line for most programs by clicking on the **NJOneApp** link and continue to the “Apply for Services” section. Please make sure that you complete all sections as requested and provide complete information. Once you submit the application, you will receive a confirmation number. The agency will receive the application electronically and contact you by mail within 7 - 10 days to schedule an in-person or telephone interview. Elderly and Disabled individuals are not eligible to apply for Medicare through the on-line application process.

ORADELL SPECIAL EVENTS



JOIN THE FUN!!!

Help make Oradell Events be memorable for everyone.
If your interested in volunteering or making a donation to the Fireworks fund,
please contact events@oradell.org

Unfortunately, due to COVID-19, all Borough events will be scheduled when permitted.
Please check www.oradell.org regularly for updates & event information.



TOWNWIDE GARBAGE PICK UP
TWICE-A-WEEK (Mondays & Thursdays)

RECYCLING ON WEDNESDAYS

Grass/Vegetative Waste pickup on THURSDAYS during the months of April through October.

LOCATIONS FOR HAZARDOUS WASTE, TIRES, PAPER SHREDDING AND ELECTRONICS

Bergen Community College
400 Paramus Road, Paramus

Campgaw Mountain Reservation
200 Campgaw Road, Mahwah

Bergen County Utilities Authority
Foot of Empire Blvd., Moonachie

www.bcua.org or 201 807-5821

For concerns regarding missed garbage, recycling or grass/vegetative waste
please call DPW at (201) 261-8610.



GET THE FREE RECYCLE COACH APP FOR THE COMPLETE TRASH AND RECYCLING INFORMATION. CHECK OUT WWW.ORADELL.ORG FOR MORE INFO.



*****ECRWSS*****
POSTAL CUSTOMER
Oradell, New Jersey
07649

PRSR STD
U.S. POSTAGE
PAID
PARAMUS, NJ
PERMIT NO. 307